



PRE-QUALIFICATION DOCUMENT

Industrial City of Abu Dhabi (ICAD) | P.O. Box 39853, Abu Dhabi, UAE
Tel: +971 2 5500177 | Fax: +971 2 5500199 | Email: info@unionrebar.ae

SECTION	PAGE
1. Company Profile.....	3
2. Company Products & Services.....	8
3. Company Machinery.....	14
4. Quality.....	19
5. Project Portfolio.....	27
6. Company Registrations	35
7. Consultants Approval.....	37
8. Vendors.....	39
9. Legal Documents and Certificates.....	41
10. Location map.....	62



1. INTRODUCTION





INTRODUCTION

Union Rebar Factory (URF), a subsidiary of Ittihad International Investment LLC, was established in 2005 with the sole objective of serving the most dynamic construction industry in the UAE. URF is predominantly focused on reinforcement steel, cutting & bending of steel rebar, and supply of allied basis building material products like Timber, Plywood, Wire mesh, Cement etc.



URF is actively involved in trading straight steel bars and provides integrated reinforcing steel solutions such as cutting & bending to its extensive network of clients. In addition, all reinforced steel is from various sources complying with most stringent international standards.

The company also specializes in mechanical coupling systems & solutions, epoxy coating and offers other engineering services on a wide spectrum of rebar works. This has been one of the foremost reasons why URF has attained unparalleled levels of professional excellence, reliability, and quality in their business dealings.

Since its inception, URF testifies to its corporate philosophy by offering best-in-class services, on time delivery and top quality products at the most competitive prices to its clients across the 7 Emirates of the UAE.

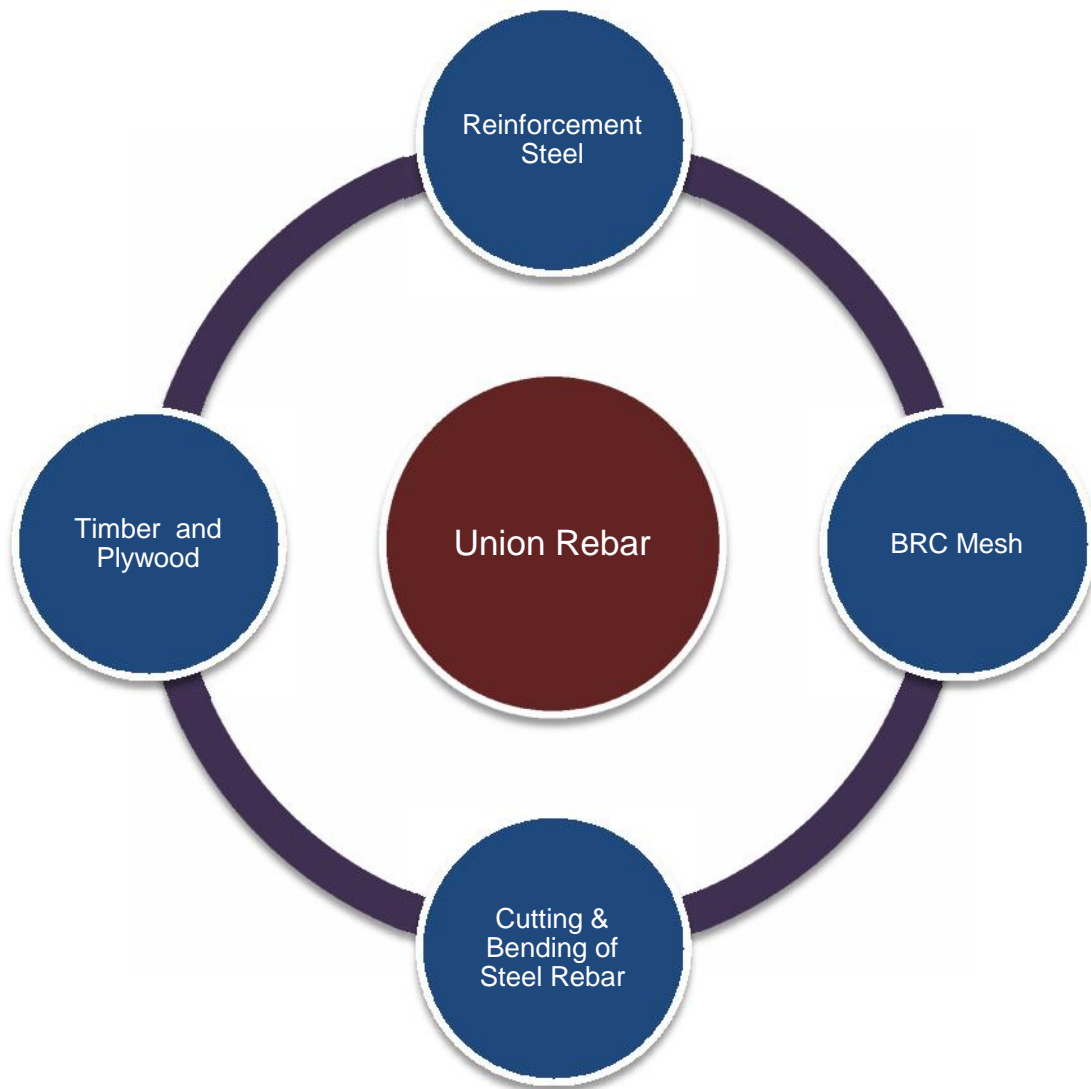
URF has a capacity of 200,000MT/annum for fabrication of steel and 200,000MT for straight bar trading in its factory covering an area of approximately 25,000 sq. mtr.

Backed by an outfit of more than 200 qualified professionals, URF provides professional services to its clients in the UAE and ensures services confirming internationally accepted quality standards.

INTRODUCTION

URF is proud to be an ISO certified company lead by a professional team specializing in all functions of the industry with a well-structured Environment, Health and Safety procedures in place.

Over the years, URF has carved a niche as a trusted quality conscious organization, embracing the latest technologies and working techniques in all its activities including Field Work, Administration and Project Management.



Vision

-) Aspire to become a leader of Rebar & cut and bend steel supplier in the whole of UAE

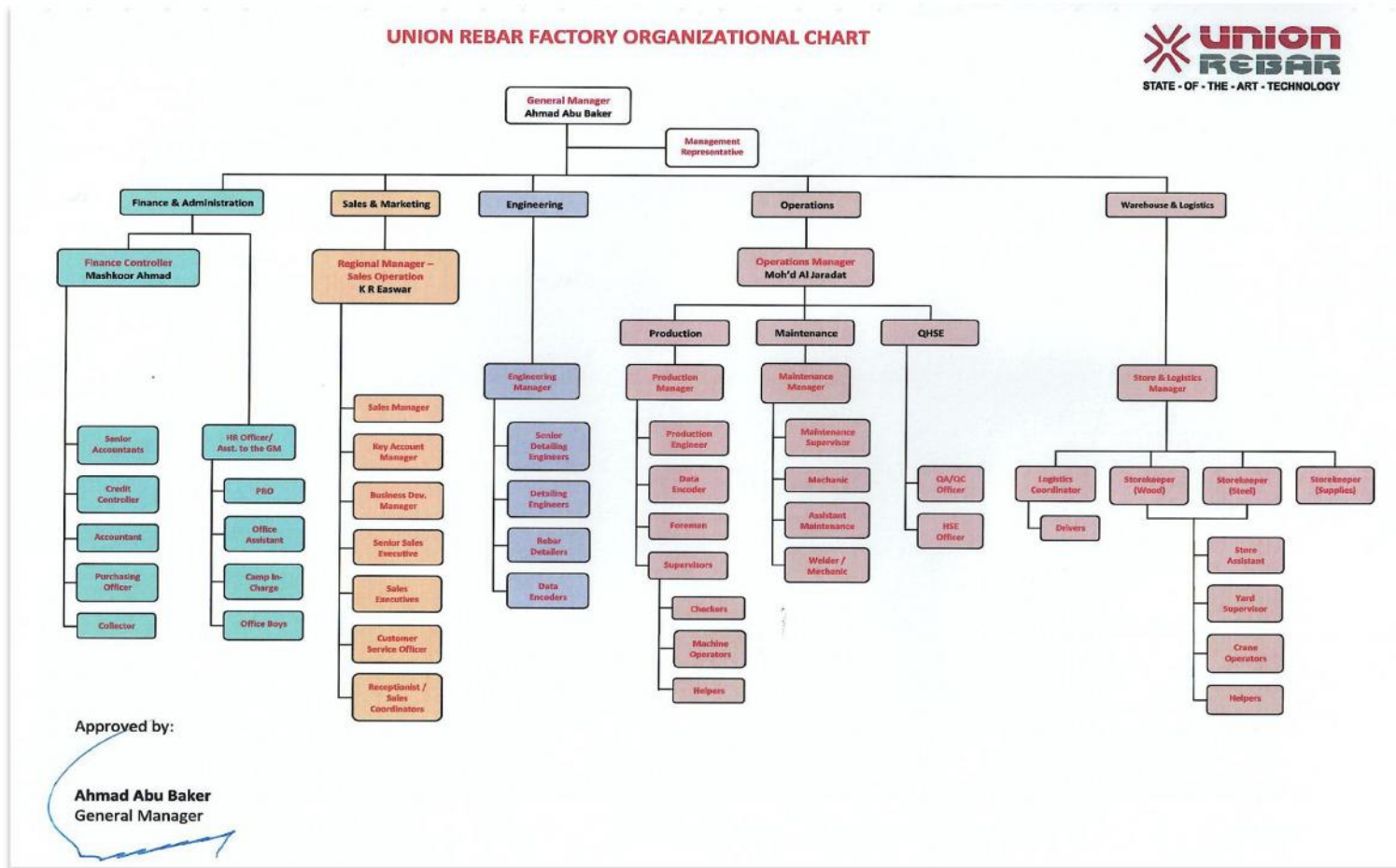


Mission

-) To strive to become a renowned supplier in the construction industry providing supreme Quality Products & Services.
-) To achieve unparalleled levels of professional excellence, reliability and quality in all business dealings.
-) To create healthy and professional work environment for employees fostering teamwork and leadership qualities.
-) To collectively strive for excellence to set Towering Standards.



ORGANIZATIONAL CHART





2. COMPANY PRODUCTS & SERVICES





Union Rebar Factory has set unparalleled professional quality standards in their business dealings, services and products. As a result their Clients, Contractors and Trading Partners benefit from dealing with a professional organization that believes in delivering quality on time. URF services are tailor-made to cater all needs of complex and ultra-modern projects.

Union Rebar Services

- Supply of reinforced steel from various sources complying with international standards
- Engineering services including design and detailing services for Rebar
- Accurate cut and bend reinforcing steel supply & project in conformance to standards
- Epoxy Coated reinforcing steel to ensure the corrosion protection, including fabrication
- Mechanical coupling system and solutions for Rebar
- Supply of various types of shuttering Marine Plywood
- Supply of White Wood
- Fabrication and supply of Wire Mesh



SPECIFICATIONS OF STEEL	BS 4449 GRADE 500 TYPE B
SIZE (MM)	8, 10, 12, 14, 16, 20, 25, 32, 40
TYPE	<ul style="list-style-type: none">) 12m Straight Bars (Black and epoxy coated steel)) Cut & Bend) Coupler and Threading) Materials can be Epoxy Coated or Normal steel bar
MAJOR MILLS & SUPPLIERS	<ul style="list-style-type: none">) UAE Origin Mills <ul style="list-style-type: none"> - Emirates Steel Industry - Conares Metal Supply - Hamriyah Steel) Turkish Manufacturing Mills <ul style="list-style-type: none"> - Habas - Kroman - ICDAS) Jindal Shadeed Oman



Mat	Mat	Pitch		Wire Size		Section		Mass	
		Main	Main	Main	Cross	Main	Cross	Mat	M2
Size	Type	mm		mm		Cm/M2		Kg	
Square Mesh									
4.80 x 2.40	A565	200	200	12	12	5.65		102.3	8.88
	A393	200	200	10	10	3.93	3.93	71.0	6.16
	A252	200	200	8	8	2.52	2.52	45.5	3.95
	A193	200	200	7	7	1.93	1.93	34.8	3.02
	A142	200	200	6	6	1.42	1.42	25.6	2.22
	A98	200	200	5	5	0.98	0.98	17.74	1.54

SUPPLY OF PLYWOOD & TIMBER

Union Plex shuttering / marine plywood is produced as union branded product with stringent quality of manufacturing in order to provide durability for multiple uses in concrete casting. To extend and add value to our clients along with steel supply, we also handle construction grade Timber and Plywood.

The range includes all sizes of white wood imported from Romania and shuttering plywood (marine) in 5 types of quality range.

-) Uni Plex
-) Union Plex
-) Petra Plex
-) Union Pro
-) Q-Plex

We propose to add more range of product in this category in future.



Supplying Film Faced Plywood, Romanian White wood

Characteristics		Unit of Measure	Test Method	Value	Result
Moisture Content		%	En 322	6.82	Approved
Density		Kg/m ³	En 323	582	Approved
Longitudinal Module of Elasticity		Map	En 310	6798	Approved
Lateral Module of Elasticity		Mpa		6798	Approved
Longitudinal Bending Strength (N/mm)		Mpa	En 310	63.6	Approved
Lateral Bending Strength (N/mm)		Mpa		46.8	Approved
Bondin	Bonding Quality	En 314	Max: 1.65 Mini: 84	Approved	Approved

Specifications	
Shuttering / Marine Plywood	13 ply with Dyna Film Face 120g / m
Combi Core Wood 18mm thickness	WBP Phenolic Glue
Water resistant coat for edge sealing	Main use: Shuttering / Concrete Casting



3. COMPANY MACHINERY



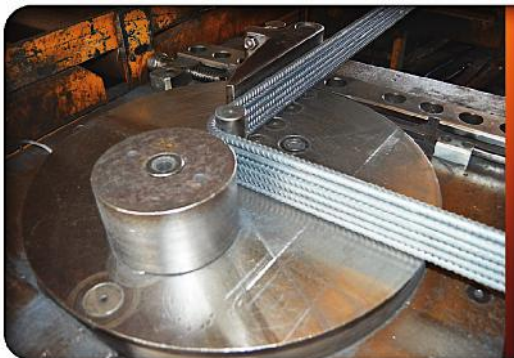


Cutting Line



Fully automated cutting cycles are programmed, stored and controlled by a dedicated industrial computer which can be interfaced with remote PCs. These machines are manufactured by one of the best European manufacturers using the latest technology in Steel cutting

Automatic Bending Machine



URF is equipped with the latest bending machines capable of carrying out all forming operations on iron bars for reinforced concrete in fully automatic cycle. The working operation can be performed in automatic, semi-automatic or manually

Stirrup Machine



Automatic Stirrup Bender, bidirectional, electronically controlled for the production of small and medium sized stirrups, able to produce cut to length bars, as well as bent/shaped bars with bends on one side, up to a length of 12m.

The Straightening technology guarantees maximum flexibility and quality within specific production requirement.

Threading Machine



The Dextra machines used for the threading forged ends of reinforcement bars perfectly connecting with Dextra couplers. This machine is designed to cut rebar threads different sizes ranging from 12mm-40mm diameters

ABU DHABI FACTORY MACHINERY LIST

Cutting Line	<ul style="list-style-type: none">) 4 Nos.: OSCAM Multiline T530 Shear Line
Automatic Bending Machine	<ul style="list-style-type: none">) 6 Nos.: OSCAM Bending Machine Model L1) 5 Nos.: OSCAM Bending Machine Model K) 2 Nos.: OSCAM Bending Machine Model K2) 5 Nos.: OSCAM Futura/2 Robot Bending System
Stirrup Machine	<ul style="list-style-type: none">) 1 Nos.: MEP Stirrup Bender Machine Concept 91) 2 Nos.: MEP Bending Machine Focus 12') 1 Nos.: OSCAM Spiral Machine "86 2R") 1 Nos.: Progress Machine 3D- 16A
Threading Machine	<ul style="list-style-type: none">) 2 Nos.: DEXTRA Bartec Threading Machine) 5 Nos.: LENTON Threading Machine
Overhead Cranes	<ul style="list-style-type: none">) Konecranes 10 Ton Double Overhead crane with 2m Duty) Konecranes 8 Ton Double Overhead crane with 3m Duty
Mobile Crane	<ul style="list-style-type: none">) Tadano Crane TL 300 E
Gantry Crane	<ul style="list-style-type: none">) Two Hoiste
Forklift	<ul style="list-style-type: none">) 2 Nos.: CAT Forklift /TCM

DUBAI FACTORY MACHINERY LIST

Wire Mesh Set	<ul style="list-style-type: none">) 1 Nos.: Cold Rolling Machine DEM 2017) 5 Nos.: DELISI Straightening Machine) 2 Nos.: EVG Wire Mesh Welding Machine
Cutting Line	<ul style="list-style-type: none">) 1 Nos.: Schnell Shear Line) Omes Shear Line Full Set) 1 Nos.: Double Bender) 2 Nos.: Single Bender) 2 Nos.: Double Bender) 4 Nos.: Single Bender
Automatic Bending Machine	<ul style="list-style-type: none">) 5 Nos.: Bending Machine
Stirrup Machine	<ul style="list-style-type: none">) 1 Nos.: Schnell Stirrup Bender Machine Concept 91) 2 Nos.: Schnell Bending Machine
Threading Machine	<ul style="list-style-type: none">) 1 Nos.: DEXTRA Bartec Threading Machine) 2 Nos.: LENTON Threading Machine
Overhead Cranes	<ul style="list-style-type: none">) 6 Nos.: DEMAG Konecranes
Mobile Cranes	<ul style="list-style-type: none">) 2 Nos.: Tadano Crane TL 300 E
Forklift	<ul style="list-style-type: none">) 2 Nos.: CAT Forklift



4. QUALITY



Union Rebar Factory (URF) is very well equipped to fabricate the reinforcing steel bars in consistently accurate manner complying with the projects' standards and specification. Union Rebar Factory by applying high quality management procedures ensures that rebar purchasing, storing, epoxy coating, fabrication, bundling, tagging, loading and transportation are being carried out according to the international standards and quality requirements. We also guarantee the perfect traceability for the rebar, starting from the manufacturer, passing through our factory and ending up at the project site. Moreover, in case of epoxy coated rebar requirements, strict procedures are applied to our coater to maintain the same level of perfect traceability.

ISO Certification:

On 23th June, 2010, URF was officially announced an ISO certified company in the following categories (by TUV SUD Germany):



-) EN ISO 9001:2008 - Certified for standards in quality management systems
-) EN ISO 14001:2009 - Certified for standards in environmental management systems
-) OHSAS 18001:2007 - Certified for standards in occupational health & safety (OH&S) standards



URF is well equipped to fabricate reinforcing steel bars conforming to the required standards and specifications of the Awarded Projects.

URF emphasizes on the quality and accuracy of the cut & bend operations as it is a vital factor in any project. All fabrication activities are carried out according to BS8666:2000 or to the precise project specification.

URF provides steel with high quality manufacturing strictly from approved manufacturing mills around the world produced with the highest standards and specifications.

URF applies the following procedures to ensure the entire quality aspects for supply of the reinforcing steel bars:

A. General

A.1. Receipt the Rebar from the Source:

-) Upon the receipt of the rebar bundles from the manufacturer supervisor visually inspects the following:
 - o Steel in bundles are not twisted
 - o Steel is not discolored
 - o Bundles are properly tagged and matching with the Mill test certificate
-) The rebar bundles will then be unloaded and stacked properly using power lift equipment's in stacking area keeping the bundles straight aligned
-) The stacked reinforcing steel shall always be kept totally protected and covered by heavy duty water-proof tarpaulin covers
-) No tag is allowed to be removed from any bundle in the storage area

A.2. Rebar Fabrication and Delivery:



URF emphasizes the quality and accuracy of cutting and bending operations as vital factors to the project progress to ensure proper fit on site and perfect matching to the required standards. Thus, following quality procedures are followed in the production process:

-) All fabrication activities are carried out according to 858666:2000 or to the specific project specifications if exist. Lengths and shapes shall be as per the customer’s approved order and BBS
-) Bars are cut to the required lengths using the very accurate automated shear lines. Cast numbers for opened bundles are immediately shifted to the cutting list for all cut bars
-) Cut bars are bent using either the automatic bending machines or our fully automated robot bending systems based on the length, shape and size
-) Fabricated bars shall be grouped, bundled and properly tagged. Cast numbers will be shifted from the cutting list to all related tags that will also maintain all other bar mark information
-) Fabricated rebar bundles will eventually be loaded and delivered according to the customer’s schedule. They are placed on the trailer properly to ease the unloading process and to satisfy the secure transport and traffic regulations.
-) A delivery note, BBS showing all loaded bar marks, and the related mill test certificates are provided to the customer with all deliveries

A.3. Traceability:



During all activities Union Rebar Factory assures the full traceability for the reinforcing steel so all batches of either straight or fabricated bars can be traced back to the original mill test data.

-Perfect traceability for the straight bars is achieved by matching the cast number mentioned on the bundle's tag with the related manufacturer's mill test certificate.

- A delivery note and related mill test certificates are provided to the customer for all epoxy straight rebar bundles

-For the fabricated bars; (please refer to A.2.).

B. Epoxy Coated Reinforcing Steel Bars

Epoxy coated reinforcing steel bars shall be dealt more carefully. Following are the basic steps Union Rebar Factory follows at all stages in dealing with the epoxy coated reinforcing steel to ensure the corrosion protection benefits of the epoxy coated rebar:

B.1. Sending the rebar bundles for coating:

-) Prior to loading, proposed rebar bundles are visually checked. They shall be straight aligned and their surfaces shall be suitable for epoxy coating
-) A delivery note showing the loaded quantity information including bundles' numbers and their related cast numbers will be issued from Union Rebar Factory to the coater



B.2 Receipt of epoxy coated steel from the coater:

-We receive back the same rebar bundles epoxy coated and carefully loaded onto the trailer with nylon straps, placed on and separated by wooden timbers.

-Before unloading the bundles we check for the following:

- Proper padding and separations for the bundles
- Same original tags shall be attached in addition to the coaters' tags. The coater shall provide a certificate of guarantee and in-house inspection test report each load along with the delivery note
- Visual inspection for epoxy coating damages. The ties shall be secure for unloading

- If epoxy coated bundles pass our initial inspection. Our staff starts unloading the bundles very carefully using power lift equipment's hanging each bundle by rope strings from three points (i.e. one in both sides and one in the middle) taking into consideration that the coated bundles do not come in contact with the bare metal or rough surface of the trailer to avoid any damages. No chains or bare cables are allowed for unloading the epoxy coated bundles.

B.3. Storage:

-) The epoxy coated bundles are stacked over wooden supports close together to avoid sagging
-) It is not allowed under any conditions that the epoxy coated bundles being stacked on the ground or on any other unprotected surface
-) The stored epoxy coated bundles will again be covered with nylon covers

B.4. Fabrication:

When start fabrication for the epoxy coated reinforcing steel, following steps are strictly followed in our factory to avoid damages for the epoxy coating:

QUALITY

-) Any bundle to be used shall be shifted from the stacking area very carefully using three points hanging rope strings. It shall be placed as close to the working area as possible over wooden timbers or Teflon covered surfaces
-) All machinery surfaces exposed to contact with the epoxy coated rebar during the production cycle shall be entirely covered with Teflon sheets
-) All bending pins shall be protected with specialized PVC mandrels
-) All spirals are produced using drums wrapped with flexible heavy-duty rubber
-) No contact between the coated rebar and bare surfaces is allowed
-) All finished products shall be properly repaired for cutting ends and any scratches, stacked over wooden supports, grouped and tied in bundles over nylon protection sheets and tagged to become ready for loading and delivery
-) Other quality procedures and applied standards shall be as per (A.2. rebar fabrication and delivery)

B.5. Final Inspection and Repairs:

Once a coated rebar is fabricated, a final inspection is made to repair all cutting ends and any handling scratches using the specialized epoxy repair-kit. In repairing the damaged areas, we follow the following procedures:

-) Repair mixture is prepared as per the manufactures instructions
-) The scratches areas are carefully cleaned with wire brush to remove all contaminants prior to applying the repair mixture
-) The repair mixture is applied carefully to the cleaned scratched areas using a paint brush in sufficient overlap with the adjacent coating
-) Applied repair mixture is left for a sufficient time as mentioned in the manufacturer's instructions to allow proper hardening

B.6. Loading and transportation:

-) Loading, as in unloading and shifting during fabrication, shall be always carried out using rope strings and no chains or bare cables are allowed

QUALITY

-) Placing onto the trailer shall be over wooden supports close together to avoid sagging. It is not allowed under any conditions that the epoxy coated bundles being loaded on the bare surface of the trailer
-) Epoxy coated bundles shall be properly separated by wooden timbers and tied down by rope strings to avoid movements and friction during transportation to the project site.
-) Strict instructions are given to our drivers to drive carefully and smoothly to avoid bundles movements and rebar friction on the road.

B.7. Traceability:

During all supply stages for the epoxy coated reinforcing steel, Union Rebar Factory assures the full traceability, so all batches of either straight or fabricated bars can be traced back to the original mill test data.

-) Perfect traceability for the straight epoxy coated rebar bundles is achieved by matching the cast number mentioned on the bundle's tag with the related manufacturer's mill test certificate upon receiving the steel from the manufacturer, sending it for epoxy coating, receiving it back from the coater and delivery to the project site. (Please refer to B.1.and B.2.).
-) For the fabricated epoxy coated reinforcing steel bars; (Please refer to B.4.).
-) For some specific prestigious projects, we assign a representative from our side to witness all epoxy coating process in the coater's factory to avoid any probability of rebar mixing. This will be followed in "Saadiyat Bridge Project".

B.8. Recommendation to Our Customers:

However that unloading, storing, placing, and concreting the epoxy coated rebar is the responsibility of our customer, we advise them to strictly follow our above mentioned quality plan and procedures in dealing with the epoxy coated bars at the project site during all activities. In addition to the above, we emphasize that using common sense precautions and some extra care will eliminate most damages in the epoxy coated rebar starting at the epoxy coating factory passing through the URF and ending at the project site.



5. PROJECT PORTFOLIO



CURRENT PROJECTS IN PROGRESS



Major Current Projects in Progress for Supply of Reinforcement Steel Cut & Bend							
No	Year(s)	Project Name	Consultant Name	Main Contractor	Project Location	Approx. Qty. (MT)	Approx. Value (Million)
1	2014-2015-2016	Al Habtoor City Res. 3 Towers	Atkins	Al Habtoor Leighton Group	Dubai	55,000	105
2	2015-2016	Wafi Mall	Arkiteknik International Consulting Engineers	Al Fara'a Group	Dubai	20,000	38
3	2016-2017	Parkview	MZ Architects	Al Mansouri LLC	Abu Dhabi	13,000	24.7
4	2017	Midfield Terminal Abu Dhabi Airport	KPF & ARUP	Consolidated Contracting Eng. & Procurement S.A.L - Offshore	Abu Dhabi	18,000	34.2
5	2015-2016	Nakheel Mall @ Palm Jumerah Tower	WME	UNEC/ACTCO JV	Dubai	35,000	66.5
6	2015-2016	The Atria Tower	AK Design ECC Engineering Consultant Group	Al Rostamani Pegel LLC	Dubai	14,000	26.6
7	2015-2016	The Palm Tower Hotel	WME	UNEC/ACTCO JV	Dubai	10,000	19

CURRENT PROJECTS IN PROGRESS



Major Current Projects in Progress for Supply of Reinforcement Steel Cut & Bend

No	Year(s)	Project Name	Consultant Name	Main Contractor	Project Location	Approx. Qty. (MT)	Approx. Value (Million)
8	2015-2016	Plaza View Project	Al Bayaty Architects & Engineering	Al Fara'a Group	Abu Dhabi	5,000	9.5
9	2014-2016	Barrari 12 Towers	ALAJMI	Delta Emirates Contracting	Dubai	8,000	15.2
10	2015-2016	Al Fattan Sky Tower	AE7	Delta Emirates Contracting	Dubai	4,000	8
11	2015-2016	Jumeirah Hills Development 60 Villas	Design & Architecture Bureau	Al Basti & Muktha	Dubai	3,000	6
12	2016-2017	SPS Mamsha	RTKL (An Arcadis Company)	Pivot/San Jose – SPS Mamsha	Abu Dhabi	21,000	36
13	2016-2017	Palm Tower	Architectural Interior RSP Design, Architectural Planner & Engineers	Trojan General Contracting	Dubai	10,000	19
14	2016-2017	Hydra Avenue Tower PII	Prime Engineering	Trojan General Contracting	Abu Dhabi	5,000	9.5

CURRENT PROJECTS IN PROGRESS



Major Current Projects in Progress for Supply of Reinforcement Steel Cut & Bend

No	Year(s)	Project Name	Consultant Name	Main Contractor	Project Location	Approx. Qty. (MT)	Approx. Value (Million)
15	2016-2017	EREC Building	DEC Engineering Consultancy	Emirates Link Maltauro	Abu Dhabi	5,000	9.5
16	2016-2017	Nad Al Shiba Villas	Arif & Bintoak Consulting	Trojan General Contracting	Dubai	5,000	11.4
17	2016-2017	Mudon Development	NAGA	Trojan General Contracting	Dubai	8,300	16
18	2017	Deira Waterfront Mixed Use Development	AE7	Ssangyang Trojan JV	Dubai	9,000	17
19	2016-2017	Al Fattan Tower Downtown, Dubai	AE7	Ali Mousa & Sons Contracting	Dubai	16,000	30.4
20	2016-2017	DAMAC Carson Tower – 3 Towers	Architecture Interior Design Urban Planning	Al Arif Contracting	Dubai	10,000	19
21	2016-2017	Aluminum Refinery	BPJV	NASS Contracting	Abu Dhabi	8,000	16

LIST OF COMPLETED PROJECTS



Recently Completed Projects for Supply of Reinforcement Steel Cut & Bend							
No	Year(s)	Project Name	Consultant Name	Main Contractor	Project Location	Approx. Qty. (MT)	Approx. Value (Million)
1	2014	Bloom Central Zone W-13/01	Herberger Engineering Consultant	Shapoorji Pallonji Mideast LLC	Abu Dhabi	9,000	23
2	2014	Fairmont Hotel & Serviced Apartments	Khatib & Alami	Arabtec Construction LLC	Abu Dhabi	8,000	19.4
3	2015-2016	Commercial Bldg.	Pam Emirates Consultant	Emirates Belbadi	Abu Dhabi	6,000	12
4	2014-2015- 2016	STEP Pumping Station PS- 01- Al Wathba	Mott McDonald	Odebrecht	Abu Dhabi	5,000	12.7
5	2015	G+7 Golf Apartment Bldg. at AKOYA by DAMAC	AECOM	Transemirates Contracting	Dubai	5,000	11
6	2014	Commercial & Residential Bldg., C40 - Rawdhat	BBS	Ali & Sons Contracting	Abu Dhabi	2,500	4.75
7	2015	Beutat Tower	MAZAYA	Modern Building	Sharjah	2,500	4.8

LIST OF COMPLETED PROJECTS



Recently Completed Projects for Supply of Reinforcement Steel Cut & Bend							
No	Year(s)	Project Name	Consultant Name	Main Contractor	Project Location	Approx. Qty. (MT)	Approx. Value (Million)
8	2014-2015	Duja Tower	NEB	General Construction	Abu Dhabi	2,500	4.75
9	2014	Marina Bloom Development, - Al Bateen	Khatib & Alami	Al Shafar General Contracting	Abu Dhabi	14,000	32
10	2015	Palm Jumeirah Gold Mile Project	Arif & Bintok	Trojan General Contracting	Dubai	2,000	3.8
11	2014-2015	Nestle Factory	DAR Al Handssah	Al Shafar General Contracting	Dubai	2,000	3.8
12	2015	Akoya by Damac	BBS	SEIDCO Gen. Contracting	Dubai	2,000	3.8
13	2014-2015-2016	DAMAC Tower by Paramount	KEO International Consultant	TAV Construction	Dubai	30,000	65

LIST OF COMPLETED PROJECTS



Recently Completed Projects for Supply of Reinforcement Steel Cut & Bend

No	Year(s)	Project Name	Consultant Name	Main Contractor	Project Location	Approx. Qty. (MT)	Approx. Value (Million)
14	2015-2016	Prive by Damac	LACASA Architect & Engineering Consultant	SEIDCO Gen. Contracting	Dubai	7,000	13.3
15	2014-2015	5Towers Residence Bldg. at Dubai Silicon Oasis	Arch Group	Bu Haleeba Contracting	Dubai	6,000	10.5
16	2016-2017	Al Fattan Tower	AE7	Delta Emirates Contracting	Dubai	6,000	10.5
17	2015-2016	Damac AYOKA Park	NAGA	Delta Emirates Contracting	Dubai	6,000	12
18	2015-2016	United Square Development	EHAF Consulting Engineers	SEIDCO Gen. Contracting	Abu Dhabi	14,000	28
19	2015-2016	Wafra Development	KEO International Consultant	SEIDCO Gen. Contracting	Abu Dhabi	6,000	12
20	2014-2015	Al Jaddaf Project	National Engineering Bureau	AB Building	Dubai	4,500	9

LIST OF COMPLETED PROJECTS



Recently Completed Projects for Supply of Reinforcement Steel Cut & Bend

No	Year(s)	Project Name	Consultant Name	Main Contractor	Project Location	Approx. Qty. (MT)	Approx. Value (Million)
21	2015-2016	Wafra Development	KEO International Consultant	SEIDCO Gen. Contracting	Dubai	10,000	16
22	2013	2000 Villas, Al Ain Al Fayda	KEO International Consultant	Trojan General Contracting	Al Ain	5,000	10
23	2014	AWQAF Tower	Heberger Engineering Consulting Engineers	Al Fara'a Group	Abu Dhabi	6,200	12.4
24	2014	Al Jaddaf Golden Box	ARENCO	Modern Building	Dubai	1,000	2
25	2014	Landmark Headquarter Tower	Archgroup	Shapoorji Pallonji Mideast LLC	Dubai	10,000	20



6. COMPANY REGISTRATIONS





TO WHOM IT MAY CONCERN

This is to certify that Union Rebar Factory LLC is registered supplier of certified reinforcement steel from approved manufacturers with the following Institutions.

COMPANY	REGISTRATION NO
Abu Dhabi Oil Refining Company {TAKREER}	907449
Abu Dhabi National Oil Company (ADNOC)	905101
Abu Dhabi Municipality	00000447
Zakum Development Company (ZA DCO)	32074
Abu Dhabi Company for Onshore Oil Operations (ADCO)	15397

For further information, please feel free to contact us.

On Behalf of:

Union Rebar Factory L.L.C.



7. LIST OF CONSULTANT APPROVAL'S





LIST OF CONSULTANT APPROVAL'S



LIST OF CONSULTANT APPROVAL'S					
No	Project Name	Consultant's Name	Client's Name	Main Contractor's Name	Year
1	Al Habtoor City Residence 3 Towers	Afkins	Al Habtoor Leighton Group	Al Habtoor Leighton Group	2014
2	WAFI Hotel Complex & Mall Expansion Dubai	Arkiteknik Int. Cons. Eng.	MKM Commercial Holding LLC	Al Fara'a Group	2015
3	Parkview	MZ Architects	BLOOM Properties	Al Mansouri 3B LLC	2016
4	Medfield Terminal Abu Dhabi Airport	KPF & ARUP	Abu Dhabi Airports	CCC	2017
5	Nakheel Mall @ Palm Jumeirah Tower	WME	Nakheel Properties	UNEC-ACTCO JV	2015
6	The Palm Tower Hotel	WME	Nakheel Properties	UNEC-ACTCO JV	2015
7	The Atria Tower	AK Design ECC Eng. Cons. Group	Deeyar Developments PJSC	Al Rostamani Pegel LLC	2015
8	Plaza View Project	Al Bayaty Arch. & Engineering	TMKN Property	Al Fara'a Group	2015
9	Barrari 12 Towers	ALAJMI	Tanmiyat Global Real Estate Development LLC	Delta Emirates Contracting	2014



LIST OF CONSULTANT APPROVAL'S



LIST OF CONSULTANT APPROVAL'S					
No	Project Name	Consultant's Name	Client's Name	Main Contractor's Name	Year
10	Al Fattan Sky Tower	AE7	Al Fattan Properties	Delta Emirates Contracting	2015
11	Jumeirah Hills Development 60 Villas	Design & Arch. Bureau	Jumeirah Hills Dev't LLC	Al Basti & Muktha	2015
12	SPS Mamsha	RTKL Associates	Tourism Dev. & Inv. Company	Pivot/San Jose-SPS Mamsha	2016
13	Palm Tower	Architectural Engineers	Nakheel Emirates Tower	Trojan General Contracting	2016
14	Hydra Avenue Tower PII	Prime Engineering	Hydra Properties	Trojan General Contracting	2016
15	EREC Building	DEC Eng. Consultancy	Emirates Real Estate Corp.	Emirates Link Maltauro	2016
16	Nad al Shiba Villas	Arif & Bintook Consulting	Nakheel Emirates Tower	Trojan General Contracting	2016
17	Mudon Development	NAGA	Dubai Properties	Trojan General Contracting	2016
18	Al Fattan Tower Downtown	AE7	Al Fattan Properties LLC	Ali Mousa & Sons Contracting	2016
19	DAMAC Carson Tower 3 Towers	Architecture Interior Design Urban Planning	Damac Crescent properties LLC	Al Arif Contracting	2016
20	Aluminum Refinery	BPJV	EGA (Emirates Global Aluminum)	NASS Contracting	2016



LIST OF CONSULTANT APPROVAL'S



LIST OF CONSULTANT APPROVAL'S					
No	Project Name	Consultant's Name	Client's Name	Main Contractor's Name	Year
21	MBR City District 1-Phase1, Community 9&10	AE7	Merydan Sobha LLC FZ	MS Construction LLC FZ	2016
22	Kings College Hospital	WME	KCH Healthcare LLC	Shapoorji Pallonji Mideast LLC	2017
23	Bloom Central Zone W13/01	Herberger Eng. Consultants	Bloom Properties	Shapoorji Pallonji Mideast LLC	2014
24	Fairmont Hotel & Serviced Apartments	Khatib & Alami	National Investment Corporation (NIC)	Arabtec Construction LLC	2014
25	STEP Pumping Station PS-01, Al Wathba	Mott McDonald	Abu Dhabi Sewerage Services Company	Odebrecht	2014
26	G+7 Golf Apartment Building at AKOYA by DAMAC	AECOM	DAMAC Properties	Transemirates Contracting	2015
27	DUJA Tower	NEB	Naseer Abdulla Lootah Real Estate	General Construction	2014



LIST OF CONSULTANT APPROVAL'S

No	Project Name	Consultant's Name	Client's Name	Main Contractor's Name	Year
28	Marina Bloom Development	Khatib & Alami	Bloom Properties	Al Shafar General Contracting	2014
29	DAMAC Tower by Paramount	KEO International Consultant	Damac Star Properties LLC	TAV Construction	2014
30	PRIVE by DAMAC	LACASA Architect & Eng. Consultant	NAMAA Properties Development LLC	SEIDCO Gen. Contracting	2015
31	5 Towers Residence Bldg. at Dubai Silicon Oasis	Arch Group	Moh'd Bin Rashid Housing Est.	Bu Haleeba Contracting	2014
32	Al Fattan Tower	AE7	Al Fattan Properties LLC	Delta Emirates Contracting	2016
33	United Square Development	EHAF Consulting Engineers	International Capital Trading	SEIDCO Gen. Contracting	2015
34	Wafra Development	KEO International Consultant	Al Wafrah Real Estate Company	SEIDCO Gen. Contracting	2015
35	Landmark Headquarter Tower	ARCH Group	Landmark Asset Holding Limited	Shapoorji Pallonji Mideast LLC	2014
36	Akoya Oxygen 134 Villas	ECCE	Frontline Inv. Mgt. Co. LLC	Hadeed Emirates Contracting	2017
37	Al Jimi Mall Phase 3 Development	ACG	ALDAR	Pivot Engineering	2015
38	Hotel Apartments & Residential Building	CV Tec Consulting Engineers	AZIZI	Ghantoot Gulf Contracting	2016



LIST OF CONSULTANT APPROVAL'S



LIST OF CONSULTANT APPROVAL'S					
No	Project Name	Consultant's Name	Client's Name	Main Contractor's Name	Year
39	Hydra Village, Abu Dhabi	NEB Engineering Consultancy	Hydra Properties	Trojan General Contracting	2015
40	Citizens Affairs Division Building, Abu Dhabi	ARMSTRONG	Crown Prince Court	ARABTEC Construction	2016
41	The Constellation	Meinhardt	Urban Planning Council	Al Fara'a Group	2015
42	West Yas Residential	JLA International Engineering	ALDAR	Arabtec Construction	2016
43	The Residences at Marina Gate 1	ECCE	Select	ALEC	2016
44	R989 Access to Blue waters Island	Parsons Overseas Limited	Roads & Transport Authority	Al Habtoor Leighton	2015
45	Improvement of Mafraq to al Ghwaifat Border Post Highway	Dorsch Gruppe DC Abu Dhabi	Musanada	Al Jaber Transport & Gen. Cont. LLC	2016
46	Reem Development Cont. of Mira Townhouse	AI GURG Consultants	EMAAR Properties PJSC	Arabtec Construction	2014
47	Arabian Ranches -2 Development Palm Community	AI GURG Consultants	EMAAR Properties PJSC	Arabtec Construction	2015
48	Akoya Park Phase 1	AECOM	DAMAC	Delta Emirates Contracting	2014



SAMPLE OF CONSULTANT'S APPROVAL



- **Contractor:** Consolidated Contracting Engineering & Procurement S. A. L – Offshore
Project Name: Automated People Mover Head House Phase 1, Abu Dhabi Airport

					
MATERIAL SUBMITTAL					
Contract No	AUH.06.15.0552	MS No	MS-0552-CV-0079		
Contract Title	Automated People Mover Head House Phase 1 - Construction	Rev.	00		
From	CCEP	Date	24-Jan-17		
To	AECOM				
Manufacturer	Union Rebar Factory LLC				
Local Agent/Supplier	Union Rebar Factory LLC				
Description of the Material		<input checked="" type="checkbox"/> As per Specification	<input type="checkbox"/> Alternative	Discipline	
Material Submittal for Steel Reinforcement (Conares Steel)				Civil / Utilities / Survey	
				Action Required	
				Approval	
BOQ / Drawing Ref. No. / Specification No.		List of Documents attached			
Section 032000 APM HH		3 samples			
Material Required in Site as per Programme	24/01/2017	Expected date of material arrival on Site	224/01/2017		
Raised By	Contractor's Authorized Signature & Stamp				
Suhail Sawalha					
Design Consultant Comments (If applicable)					
Design Consultant Comments by			Design Consultant's Authorized Signature		
Engineer's Comments					
Engineer Status Code <input type="checkbox"/> 1 - No Exception Taken <input type="checkbox"/> 2 - Exceptions as Noted <input type="checkbox"/> 3 - Revise and Resubmit <input type="checkbox"/> 4 - Rejected <input type="checkbox"/> 5 - Review Not Required <input type="checkbox"/> 6 - Issued for Construction					
Reviewed By	Engineer's Signature		Date		
ADAC Comments / Recommendation (as applicable)					
Compliance Status					
<input type="checkbox"/> Compliant					
<input type="checkbox"/> Non-Compliant					
Reviewed By	Signature		Date		

Form ID - PD-CC-F-004-R1

Page 1 of 1



SAMPLE OF CONSULTANT'S APPROVAL



- **Contractor:** PIVOT San Jose JV
Project Name: SPS Mamsha Saadiyat Phase 1, Abu Dhabi

RTKL DEWAN Architects & Engineers
SPS MAMSHA JV
TDC

SUBMITTAL TRANSMITTAL (MATERIAL)

Project : P147- Mamsha Al Saadiyat Island, Abu Dhabi Date: 30/10/2016
 Package - C02 Main Contract Works Project Number: P147
 Submittal No. : P147-SPS-STR-MAT-0050 Revision: A

TRANSMITTAL To: RTKL/DEWAN Attn: Mr. Geoff Ford / Mr. Imad Sadeq
 From: SPS Mamsha JV Name/Sign : Samir Al Abd

Discipline: Architectural Structural A/C Electrical Plumbing Landscaping

Title / Description: Reinforcement Steel Bars for Concrete
 Manufacturer / Supplier: Conarus Steel/Union Rebar
 Spec. Section Title and Paragraph: Section 03200 Clause 1.5, 1.9, 1.0 Concrete Reinforcing
 Drawing Detail Reference: P1-S0100 Structural General Notes
 B.O.Q. Reference: NA
 Area of Use: To be used as Reinforcement for Structural Concrete, Project wide

Enclosures/Attachments:

Specifications
 Compliance Statement Manufacturer's Technical Literature Previous Test Reports/ Certificates
 Samples Copy of Related Specifications Authorization letter (From Manufacturer)
 Others:

Submitted for review and approval Substitution involved - Substitution request attached
 Resubmitted for review and approval Resubmission-Comment reply sheet attached
 Submitted for information only If substitution involved submission includes point-by-point comparative data or preliminary details
 Complies with Contract requirements Items included in submission will be ordered immediately upon receipt of approval
 Will be available to meet construction schedule
 EA review time included in construction schedule

TRANSMITTAL To: RTKL/DEWAN Attn: Mr. Geoff Ford / Mr. Imad Sadeq
 From: SPS MAMSHA JV Date Rec'd by: _____

Approved Revise / Resubmit
 Approved as noted Rejected / Resubmit

Other remarks on above submission One copy retained by sender

Name: _____ Sign: _____ Date Transm't'd by Contractor: _____

Page 1 of 2 Form F12.2A

RTKL DEWAN Architects & Engineers
SPS MAMSHA JV
TDC

SUBMITTAL TRANSMITTAL (MATERIAL)

Project : P147- Mamsha Al Saadiyat Island, Abu Dhabi Date: 30/10/2016
 Package - C02 Main Contract Works Project Number: P147
 Submittal No. : P147-SPS-STR-MAT-0050 Revision: A

TRANSMITTAL To: SPS MAMSHA JV Attn: Samir Al Abd Date Rec'd by ER : _____
 From: RTKL/DEWAN Name/Sign : Mr. Geoff Ford / Mr. Imad Sadeq Date Transm't'd by: _____

ER approval is for conformance with information given and design concept expressed in Contract Documents. Approval does not authorize changes to Contract Documents.
 ER approval does not relieve the Contractor from his contractual obligations to ensure conformance to the Contract Documents/ Specifications. Any deviations, to the Specifications/Contract documents, found subsequent to ER approval are to be corrected by the Contractor to the satisfaction of the Employer/ER at no extra Cost/Time.

ER Comments:

Related tests must be implemented as specified.

Approved
 Approved as noted
 Revise / Resubmit
 Rejected

Other remarks on above submission Comment Sheet One copy retained by sender

Name: Imad Sadeq Sign: _____ Date: 08.11.2016

TRANSMITTAL To (Subcontractor): _____ Date: _____ Date Rec'd by Contractor : _____
 From (Contractor): _____ Name/Sign : _____ Date Transm't'd by Contractor : _____

Copies: Employer _____ _____ _____ One copy retained by sender



SAMPLE OF CONSULTANT'S APPROVAL



- **Contractor:** Al Habtoor Leighton Group LLC
- Project Name:** Al Habtoor City Residence, Dubai
- 2 Towers (73 Storeys) & 1 Tower (55 Storeys)

RECEIVED
23 NOV 2014
ATKINS SITE OFFICE

3-50

The Engineer:	The Employer:	The Contractor:																					
HLG	ATKINS	HLG																					
Project: 5128018 - Al Habtoor City Residential Development																							
Material Submittal		Ref. No. HLG/928/MAS/S/0033																					
Originator of Submittal:	HLG	Date: 20-Nov-14																					
Authorized Sign:	<i>[Signature]</i>	Reqd. By: 4-Dec-14																					
Material Detail		List of Enclosure <small>(Tick the Related Box)</small>																					
Item Description		<input type="checkbox"/> Vendor's Technical Literature																					
Specs Reference	S117981/D2006-Rev., E30	<input type="checkbox"/> Compliance Statement																					
BOQ Reference	Volume 3 BOQ Al Habtoor Res	<input type="checkbox"/> Previous Test Results																					
Drawg. Reference	S117981/GE/S0101	<input type="checkbox"/> Copy of the Related Specs.																					
Material Specified	Steel Reinforcement	<input type="checkbox"/> Samples with Sample Tag																					
Material Proposed	Steel Reinforcement Bars, Sizes: 8, 10, 12, 16, 20, 25, 32, 40mm, BS4449 Grade 500	<input type="checkbox"/> List of Previous Projects Done																					
Manufacturer/ Supplier	Turkey Steel - ICDAŞ/ M's Union Rebar Rebar Factory LLC, Abu Dhabi, UAE	<input type="checkbox"/> Others (Specify)																					
Remarks	applicable zone (Tower and Podium)																						
Contractor Statement: We certify that the material submitted herewith has been reviewed in details and is in compliance with the contract drawings and specifications except as otherwise stated herewith.																							
Contractor Sign:		Date:																					
ATKINS Received Sign:	<i>[Signature]</i>	Date:																					
ATKINS Engineer's Comments:	Ref. No. 5128018/R11- H15																						
<i>Sampling & Testing to be carried out on site.</i>																							
Reviewed By:		Date: 26/11/14																					
ATKINS Resident Engineer's Comments:																							
<table border="1"> <tr> <td><input type="checkbox"/> Code A - Accepted</td> <td><input type="checkbox"/> Code D - Information, Record</td> </tr> <tr> <td><input type="checkbox"/> Code B - Accepted As Noted</td> <td><input type="checkbox"/> Code E - Review, Re-submit</td> </tr> <tr> <td><input type="checkbox"/> Code C - Rejected</td> <td></td> </tr> </table>			<input type="checkbox"/> Code A - Accepted	<input type="checkbox"/> Code D - Information, Record	<input type="checkbox"/> Code B - Accepted As Noted	<input type="checkbox"/> Code E - Review, Re-submit	<input type="checkbox"/> Code C - Rejected																
<input type="checkbox"/> Code A - Accepted	<input type="checkbox"/> Code D - Information, Record																						
<input type="checkbox"/> Code B - Accepted As Noted	<input type="checkbox"/> Code E - Review, Re-submit																						
<input type="checkbox"/> Code C - Rejected																							
<table border="1"> <tr> <td>ATKINS</td> <td>5128018</td> </tr> <tr> <td colspan="2" style="text-align: center;">APPROVAL STATUS</td> </tr> <tr> <td>By: <i>[Signature]</i></td> <td>Date: 26.11.14</td> </tr> </table>		ATKINS	5128018	APPROVAL STATUS		By: <i>[Signature]</i>	Date: 26.11.14	Ref. No. 5128018/R10- H15															
ATKINS	5128018																						
APPROVAL STATUS																							
By: <i>[Signature]</i>	Date: 26.11.14																						
<table border="1"> <tr> <td>HLG</td> <td>ATKINS</td> <td>HLG</td> </tr> <tr> <td>Project: 5128018 - Al Habtoor City Residential Development</td> <td></td> <td></td> </tr> <tr> <td>Contractor Sign:</td> <td></td> <td>Date:</td> </tr> <tr> <td>ATKINS Received Sign:</td> <td></td> <td>Date:</td> </tr> <tr> <td>ATKINS Engineer's Comments:</td> <td></td> <td>Ref. No. 5128018/R10- H15</td> </tr> <tr> <td>Reviewed By:</td> <td></td> <td>Date:</td> </tr> <tr> <td>ATKINS Resident Engineer's Comments:</td> <td></td> <td></td> </tr> </table>			HLG	ATKINS	HLG	Project: 5128018 - Al Habtoor City Residential Development			Contractor Sign:		Date:	ATKINS Received Sign:		Date:	ATKINS Engineer's Comments:		Ref. No. 5128018/R10- H15	Reviewed By:		Date:	ATKINS Resident Engineer's Comments:		
HLG	ATKINS	HLG																					
Project: 5128018 - Al Habtoor City Residential Development																							
Contractor Sign:		Date:																					
ATKINS Received Sign:		Date:																					
ATKINS Engineer's Comments:		Ref. No. 5128018/R10- H15																					
Reviewed By:		Date:																					
ATKINS Resident Engineer's Comments:																							



SAMPLE OF CONSULTANT'S APPROVAL



- **Contractor:** UNEC - ACTCO JV
Project Name: The Nakheel Mall - Palm Jumeirah, Dubai

PROJECT: NAKHEEL MALL	EMPLOYER: Retailcorp ريتال كورب	Our Ref. DMS136723/UNEC-ACTCO/MAS-0005-A
Contract No: DMS136723	ENGINEER: RSP	CONTRACTOR: UNEC - ACTCO JV THE NAKHEEL MALL - PALM JUMEIRAH
		Your ref. Date: 26-Jan-15

SUBMITTAL FOR APPROVAL OF MATERIALS

1. MATERIAL DESCRIPTION (one item only on this form):
Cut & Bend Steel (Emirates/Turkey Steel)

Area of Application: Concrete Works
 Drawing Ref. : B.O.Q. Ref. No. : Bill-3 Page 4-47 to 4-51
 Specification Ref. : 033000 Standards

Attach all relevant technical literature marked to identify relevant description, current Test Certificates, samples as appropriate.

2. MANUFACTURER/SUPPLIER :
 Company Name : M/s. Emirates Steel, M/s. ICDAS
 Address :
 Local Agent : M/s. Union Rebar

3. DELIVERY :
 Country of Origin : UAE/Turkey
 Availability: Locally Manufactured Overseas
 Delivery : Ex-works/ Total Duration [N/A]
 Estimated Time of Arrival on Site [N/A]
 Program : Date Material Required on Site [N/A]
 Latest Date for Order [N/A]

We certify that the above submitted items have been reviewed in detail and are correct and in strict conformity with the contract drawings and specifications except as otherwise stated; also that the material sources indicated above have been reviewed in detail and that they will supply the submitted items in conformity with the above and deliver same timely.

Submitted by : Eng. Ghassan Dreik (Project Manager) Signature

4. ERA'S CONSULTANT COMMENTS :

** Please submit the material samples with data for test review and approval and test to be performed in third party laboratory.*

** Material shall be complied with local project and local authority regulations.*

** Final approval subject to successful test results.*

** Contractor to follow the comments as mentioned in the submittal.*

Signature: DATE: 28/1/15

CLIENT:

Approved
 Approved As Noted
 Revise and Resubmit
 Rejected

Signature: _____ DATE: / /

CONTRACTOR:
 RESPONSE RECEIVED BY: _____ SIGNATURE: _____ DATE: _____

Approval shall not relieve Contractor of his liabilities under the Contract or constitute authorization of any change to Contract Documents.



SAMPLE OF CONSULTANT'S APPROVAL



- **Contractor:** TAV Construction
Project Name: DAMAC Tower by Paramount, Dubai



SITE TRANSMITTAL of Materials

TRANSMITTAL NO : DTP-TAV-KEO-MD-S-0024

REV : 0

To: KEO International Consultants

PROJECT: Damac Towers by Paramount
 DISCIPLINE: 2B+G+8P+A+56+R Floors
 CLIENT: Damac Star Properties LLC
 CONTRACTOR: TAV Construction

WE ARE SENDING HERewith THE DRAWINGS / DOCUMENTS / SAMPLES LISTED BELOW FOR YOUR REVIEW.

ITEM NO.	DRW., SPEC.	GENERAL DESCRIPTION AND REVISION DETAILS	TYPE (I)	COPIES	ACTION CODE (II)
1	03 21 00	Material Submittals Reinforcing Bars Union Rebar - CONCRE Steel	MD	3	B
2	03 21 00	Back up Source: Emirates Steel Industries	MD	3	B
3	03 21 00	Back up Source: Turkey Steel - Habbas	MD	3	B
4	03 21 00	Back up Source: Turkey Steel - Ictas	MD	3	B
5	03 21 00	Back up Source: Turkey Steel - Kroman	MD	3	B

We certify that the items submitted herewith have been reviewed in detail and are in strict conformance with the Contract Drawings and Specifications except as otherwise stated.

CONTRACTOR: TAV Construction
 TAV Type Aklen Investment Construction & Operations
 P.O.Box: 181900, Dubai, U.A.E.
 RECEIVED BY: KEO International Consultants
 DATE: 05/11/13

KEO'S REMARKS:

- * No objection subject to:
 - Comply with the project specifications & drawings.
 - Test results should be approved by Engineer (Permade Test as per specification requirements)
 - Only approved items should be used & follow approved shop drawings.
 - Lap length to follow project specifications & drawing (S-001)

Approval complete only should be used. Corrections or Comments made relative to comments during this review does not relieve the contractor from compliance with the requirements of his Contract, drawings and specifications. This review is only in respect of general conformance with the design intent of the project and general compliance with the information given in the Contract documents. The contractor remains responsible, among other things, for the design of the project or such parts of the project he has design responsibility for (if design forms part of the Contract), for confirming and correlating all quantities and dimensions, selecting fabrication processes and techniques of construction, coordinating his work with that of other trades, and performing his work in a safe and satisfactory manner, all in accordance with the Contract.

KEO CM / RE

DATE

- 06/11/13
- (I) TYPE: SD Shop Drawings
 - SA Sample
 - GI Guarantee
 - MD Manufacturer's Data
 - CI Certificates
 - OT Others
 - IR Test Result

RECEIVED BY TAV Construction

DATE

(II) ACTION CODE:

- A No objection
- B No objection subject to incorporation of all comments as noted
- C Rejected, to be resubmitted





8. VENDOR'S LIST





VENDOR'S LIST

-) Emirates Steel
-) Hamriyah Steel
-) Turkey Steel – *Habas, ICDAS & Kroman*
-) Conares Steel
-) Jindal Shadeed

Note: Detailed Product Submittal for Consultants Approval will be submitted in the material submittal separately as per request





9. LEGAL DOCUMENTS & CERTIFICATES





TRADE LICENSE

رخصة تجارية Trading Licence		 Jafza المنطقة الحرة لجبل علي Jebel Ali Free Zone	
LICENSE NO.	154476	رقم السجل التجاري	١٨٠٧٥٧
REGISTRATION NO.	180757	الشكل القانوني	م م ح (ذات مسؤولية محدودة)
LEGAL TYPE	FZE (Limited Liability)	اصحاب الرخصة	يو آر اف للحديد ومواد البناء م م ح
LICENSEE	URF For Steel and Building Materials FZE	الاسم التجاري	يو آر اف للحديد ومواد البناء م م ح
OPERATING NAME	URF For Steel and Building Materials FZE	الرقم التجاري	
DUNS NUMBERS		العنوان	قطعة أرض رقم ام او ٠٧٢٢ المنطقة الحرة الشمال المنطقة الحرة لجبل علي دبي الامارات العربية المتحدة
ADDRESS	Plot Number MO0722 Jafza North Jebel Ali Free Zone Dubai United Arab Emirates	المدير	احمد عدلي شكري ابو بكر
MANAGER	Ahmad Adli Shukri Abubaker	الجنسية	اردني
NATIONALITY	Jordan	تاريخ الإصدار	٢٠١٦/٠٦/٠١
ISSUE DATE	01/06/2016	تاريخ الانتهاء	٢٠١٧/٠٥/٣١
VALID TILL	31/05/2017	النشاط	تجارة منتجات الحديد الأساسية تجارة مواد البناء تجارة المنتجات الخشبية تجارة الأعمال المعدنية للأبواب تجارة الأخشاب تجارة حديد التسليح
ACTIVITY	Basic Steel Products Trading Building & Construction Materials Trading Wooden Products Trading Building Metal Products Trading Timber Trading Reinforcement Steel Bars Trading		



CN: 145076 (o)

إدارة التسجيل التجاري
COMMERCIAL REGISTRATION DEPARTMENT

صادرة عن المنطقة الحرة لجبل علي . وخاضعة لشروط التجار والقوانين واللائحة والقواعد المحددة من المنطقة الحرة لجبل علي
Issued by Jafza and subject to the terms of Lease Agreement, Laws, Regulations and Rules of Jafza

Member of Economic Zones World

License Number: CN-1180



ADCCI Unique No. 199659

Membership No 111224

غرفة أبوظبي
ABU DHABI CHAMBER

Pursuant To Law No 27 of 2005 Abu Dhabi Chamber of Commerce & Industry

Hereby Register **UNION REBAR FACTORY - L L C**

To Practice The Activities of

Nationality **U.A.E.**

Steel Bars Preparation - On-shore And Off-shore Oil And Gas Fields And Facilities Services

Address ICAD Bldg., Musaffah m 41 Ind. Area. Abu Dhabi

Nationality of Partners U.A.E.

Legal Form Limited Liability Co

Issued on 18/01/2017

Valid Until 17/01/2018



General Director



الغرفة الإلكترونية
The Smart e-Chamber

معكم سنواصل التقدم
With you we will be ahead

808543

www.abudhabichamber.ae



C E R T I F I C A T E

Certificate No. 13-QEO-1610062-TIC

WE HEREBY CERTIFY THAT THE QUALITY MANAGEMENT SYSTEM OPERATED BY

Union Rebar Factory L.L.C.

P.O. Box 39853 Abu Dhabi, United Arab Emirates

IS IN COMPLIANCE WITH THE REQUIREMENTS OF STANDARD

ISO 9001:2008

THIS CERTIFICATE IS VALID FOR THE FOLLOWING ACTIVITIES

Steel Bar Cut & Bend

AN AUDIT WAS PERFORMED, REPORT No. RR-0416-QEO-TIC-MS-1610062-13

First issuing date 28.05.2013 Expiring date 14.09.2018

(22.05.2019 After transition to ISO 9001:2015)



Bonn, 23.05.2016

Eng. K. Lindenblatt

TÜV INTERCERT Certification Body



TÜV INTERCERT GmbH - Group of TÜV Saarland · Am Bonner Bogen 2 · 53227 Bonn GERMANY
www.tuv-intercert.org

CERTIFICATE ■ CERTIFICATO ■ ZERTIFIKAT ■ ΣΕΡΤΙΦΙΚΑ ■ CERTIFICADO ■ گواهینامه ■ ΠΙΣΤΟΠΟΙΗ

**TÜV
INTERCERT
SAAR**

C E R T I F I C A T E

Certificate No. **13-QEO-1610062-TIC**

WE HEREBY CERTIFY THAT THE ENVIRONMENT MANAGEMENT SYSTEM
OPERATED BY

Union Rebar Factory L.L.C.

P.O. Box 39853 Abu Dhabi, United Arab Emirates
IS IN COMPLIANCE WITH THE REQUIREMENTS OF STANDARD
ISO 14001:2004
THIS CERTIFICATE IS VALID FOR THE FOLLOWING ACTIVITIES

Steel Bar Cut & Bend

AN AUDIT WAS PERFORMED, REPORT No. **RR-0416-QEO-TIC-MS-1610062-13**

First issuing date **28.05.2013** Expiring date **14.09.2018**
(22.05.2019 after transition to ISO 14001:2015)






Deutsche
Akkreditierungsstelle
D-ZM-16012-01-00



Bonn, 23.05.2016

K. Lindenblatt
Eng. K. Lindenblatt

TÜV INTERCERT Certification Body

TÜV INTERCERT GmbH - Group of TÜV Saarland · Am Bonner Bogen 2 · 53227 Bonn GERMANY
www.tuv-intercert.org

RTIFICATE ■ CERTIFICATO ■ ZERTIFIKAT ■ SERTIFIKATA ■ CERTIFICADO ■ گواهینامه ■ ΠΙΣΤΟΠΟΙΗ

**TÜV
INTERCERT
SAAR**

C E R T I F I C A T E

Certificate No. **13-QEO-1610062-TIC**

WE HEREBY CERTIFY THAT THE OCCUPATIONAL HEALTH AND SAFETY
MANAGEMENT SYSTEM OPERATED BY

Union Rebar Factory L.L.C.

P.O. Box 39853 Abu Dhabi, United Arab Emirates

IS IN COMPLIANCE WITH THE REQUIREMENTS OF STANDARD
BS OHSAS 18001:2007

THIS CERTIFICATE IS VALID FOR THE FOLLOWING ACTIVITIES

Steel Bar Cut & Bend

AN AUDIT WAS PERFORMED, REPORT No. **RR-0416-QEO-TIC-MS-1610062-13**

First issuing date	28.05.2013	Expiring date	22.05.2019
---------------------------	-------------------	----------------------	-------------------



DAkkS
Deutsche
Akkreditierungsstelle
D-ZM-16012-03-00



Bonn, 23.05.2016



Eng. K. Lindenblatt

TÜV INTERCERT Certification Body

TÜV INTERCERT GmbH - Group of TÜV Saarland · Am Bonner Bogen 2 · 53227 Bonn GERMANY
www.tuv-intercert.org

RTIFICATO ■ CERTIFICATO ■ ZERTIFIKAT ■ SERTIFIKATA ■ CERTIFICADO ■ αληθεύς ■ ΠΙΣΤΟΠΟΙΗΤ

No. 004/12/08/EHSMS/28



نظام إدارة البيئة
والصحة والسلامة لإمارة أبوظبي
Abu Dhabi Emirate Environment,
Health & Safety Management System



ZonesCorp
HYDRA CORPORATION FOR
SPECIALIZED ECONOMIC ZONES

CERTIFICATE OF EHS APPROVAL

This is to certify that:

EHS Management System submitted by:

M/s Union Rebar Factory LLC
Plot No.46-48C2 & 50C2 ICAD-I, Abu Dhabi
has been reviewed & found in compliance with applicable

Industrial Sector EHS Regulatory Codes of Practice

EHS MANAGEMENT SYSTEM APPROVED

*This approval however doesn't cover the implementation aspects of
EHS MS as required by Industrial Sector EHS Codes of Practice*

24 October, 2010

Date of Issue



Director, Industrial Sector EHS Regulatory Authority

Refer conditions overleaf

Page 1 of 2 FM-HSEAD13-08

الإمارات العربية المتحدة
وزارة الأشغال العامة
إدارة المناقصات والعقود

شهادة تسجيل مورد

UNION REBAR FACTORY

رقم التسجيل : 134494

الإسم التجاري : Union Rebar Factory

الإمارة : أبوظبي

الهاتف : 025500177

ص. ب : 39853

الفاكس : 025500199

مجال التسجيل : مورد

صناعة مطبة ومادة Emirates Steel Factory مورد لحديد التسليح ماركة
TURKY STEEL

صناعة تركية لمساريج الولاية TURKY STEEL

تاريخ الإصدار :
تاريخ الإنهاء :
رقم الإيصال وتاريخه : 700010799 - 28/02/2012

ملاحظة : - هذه الشهادة صادرة من وزارة الأشغال العامة ولا تحتاج الى توقيع أو ختم رسمي.
- تعتبر هذه الشهادة لاغية في حال التوثيق لصالحية الرخصة التجارية.

Reinforcement steel - الاتساقية - حديد التسليح ()
Mechanical coupler
Epoxy coating
BRC welded mesh
Reinforcement steel - الاتساقية - حديد التسليح ()
Mechanical coupler
Epoxy coating
BRC welded mesh

تاريخ الإصدار :
تاريخ الإنهاء :
رقم الإيصال وتاريخه : 700010799 - 28/02/2012

*Note: - This certificate issued by Ministry of Public Works and it does not need any signature or formal stamp.
- This certificate is canceled in case the trade license is expired.



مكتب تنمية الصناعة
Industrial Development Bureau



دائرة التنمية الاقتصادية
DEPARTMENT OF ECONOMIC DEVELOPMENT



Approval Certificate

By Authorization from AD EHS Center

Industrial Development Bureau - Department of
Economic Development

Certifies that

Union Rebar Factory LLC

Has met all the minimum requirements of Abu Dhabi Environment, Health and Safety Management System (AD EHSMS) and the Industrial Sector EHSMS Requirements Document.

Approved System:

"Environment, Health and Safety Management System of " مصنع الاتحاد لتشكيل الحديد ذ.م.م " Union Rebar Factory LLC"

Approval Date: 24-10-2010

Renewal Date: 20-12-2014

Valid Till: 20-12-2017

Approval Certificate No:

AD.EHSMS/IN/IN16/01/012/28

مكتب تنمية الصناعة - السلطة المنظمة للبيئة والصحة والسلامة لقطاع الصناعة

Industrial Development Bureau-Industrial Sector EHS Regulatory Authority

Important Note:

- System Implementation must commence within one month of the approval date, and all requirements under AD EHSMS and the Industrial Sector EHSMS Document must be complied with.
- Performance Reports must be submitted to the Industrial Sector on quarterly basis in accordance with AD EHSMS requirements.
- The external audit must be conducted by an auditing company registered with OSHAD after 12 months from system approval date and annually thereafter, with the audit reports submitted to the Industrial Sector.
- The Approval Certificate will be re-issued by the end of the third year in accordance with the annual audit results and corrective actions taken by the entity.
- This Certificate shall be revoked at any time by the Industrial Sector in case of non-compliance with the implementation requirements of AD EHSMS

ملاحظة هامة:

- يجب تطبيق النظام خلال فترة لا تتجاوز شهر من تاريخ الإصدار، والالتزام عند التطبيق بكافة متطلبات "النظام" ومتطلبات الوثيقة الخاصة بالقطاع الصناعي.
- يجب رفع تقارير الأداء الى السلطة المنظمة للقطاع الصناعي بشكل ربع سنوي وفقاً لمتطلبات "النظام".
- يجب إجراء التدقيق الخارجي من قبل شركة تدقيق مسجلة لدى "إرشاد" بعد 12 شهراً من تاريخ اصدار النظام وبشكل سنوي بعد ذلك، على أن يتم رفع تقارير التدقيق الى السلطة المنظمة للقطاع الصناعي.
- يتم إعادة منح شهادة الاعتماد مع نهاية السنة الثالثة بناء على نتائج التدقيق والإجراءات التصحيحية التي يقوم بها الكيان.
- يحق للسلطة المنظمة للقطاع الصناعي إلغاء هذه الشهادة في أي وقت في حال عدم الالتزام بمتطلبات تطبيق "النظام".

Industrial Development Bureau

T: +971 2 815 8720 / F: +971 2 815 8651
PO Box: 12, Abu Dhabi, UAE

Industrial Development Bureau has been delegated by OSHAD as Sector Regulatory Authority for the Industrial Sector, to implement OSHAD SF by entities within the Sector.

مكتب تنمية الصناعة

هاتف: +971 2 8158720 / فاكس: +971 2 8158651
ص ب: 12، أبو ظبي، أ.ع.م.

تم تفويض مكتب تنمية الصناعة كسلطة منظمة لقطاع الصناعة من قبل "إرشاد" لمناقشة تطبيق متطلبات نظام إدارة أبوظبي للسلامة والصحة المهنية من قبل الكيانات المرخصة في القطاع.

www.ded.abudhabi.ae




GOVERNMENT OF DUBAI


بلدية دبي
DUBAI MUNICIPALITY

**DUBAI CENTRAL LABORATORY DEPARTMENT
INSPECTION AND CERTIFICATION SECTION**

**DM CIRCULARS NO. (159) 2007 AND (184) 2012
CERTIFICATE OF REGISTRATION**

In compliance with the above DM Circulars for the Control of Steel for Reinforcement of Concrete in the Emirate of Dubai, Dubai Central Laboratory Department (DCLD) of Dubai Municipality, hereby issue this registration certificate to:

UNION REBAR FACTORY LLC
Industrial City of Abu Dhabi (ICAD), Mussaffah, Abu Dhabi, UAE

as a registered supplier of certified reinforcing steel from approved manufacturer/s as per "List of Registered Manufacturers" issued by Dubai Central Laboratory Department (www.dcl.ae).


ARIF HUSAIN AL MARZOOQI
Head, Products Conformity Assessment Section
DCLD, Dubai Municipality

Registration No.	AP10100165	Current Issue Date:	05 Sep 2016
Valid Until:	04 Sep 2017	Original Issue Date:	05 Sep 2010



UNITED ARAB EMIRATES
MINISTRY OF ECONOMY



الإمارات العربية المتحدة
وزارة الاقتصاد

رقم القيد 5486
تاريخ القيد : 21/4/2010

رخصة إنتاج صناعي

الجنسية
الأمارات العربية المتحدة
الأمارات العربية المتحدة

أصحاب الترخيص :
الاسم
الاتحاد الدولية للاستثمار د.م.م.
جوعان عويضة سهيل عويضة الخيلي

الإسم التجاري: مصنع الاتحاد لتشكيل الحديد

النشاط: تجهيز حديد التسليح

هاتف : 025500177

العنوان : ص.ب : 39853

المنطقة : مصفح

مدينة ابوظبي

المدينة :

الإمارة : أبوظبي

إدارة التراخيص الصناعية

تاريخ الاصدار: 17/4/2017

تاريخ الانتهاء: 16/4/2018

رقم الايصال: 170026834208



LOCATION MAP AND CONTACT DETAILS



Address:

Industrial City of Abu Dhabi (ICAD)
P.O. Box 39853, Abu Dhabi, UAE
Tel: +971 2 5500177
Fax: +971 2 5500199
Email : info@unionrenbar.ae